

User guide

SMILE LITE MDP INSTALLER

Software for updating MDP

Table of contents

Table of contents	2
1. Introduction	3
2. Preparation	3
Hardware	3
Software	3
3. Update mode	3
4. Update	4
Start of the process	4
USB Detection	5
Installation	7

1. Introduction

This document contains a detailed description of the actions needed to update the MDP.

2. Preparation

Hardware

Hardware requirement :

- Smile Lite MDP to update.
- USB cable (mini USB).
- PC.

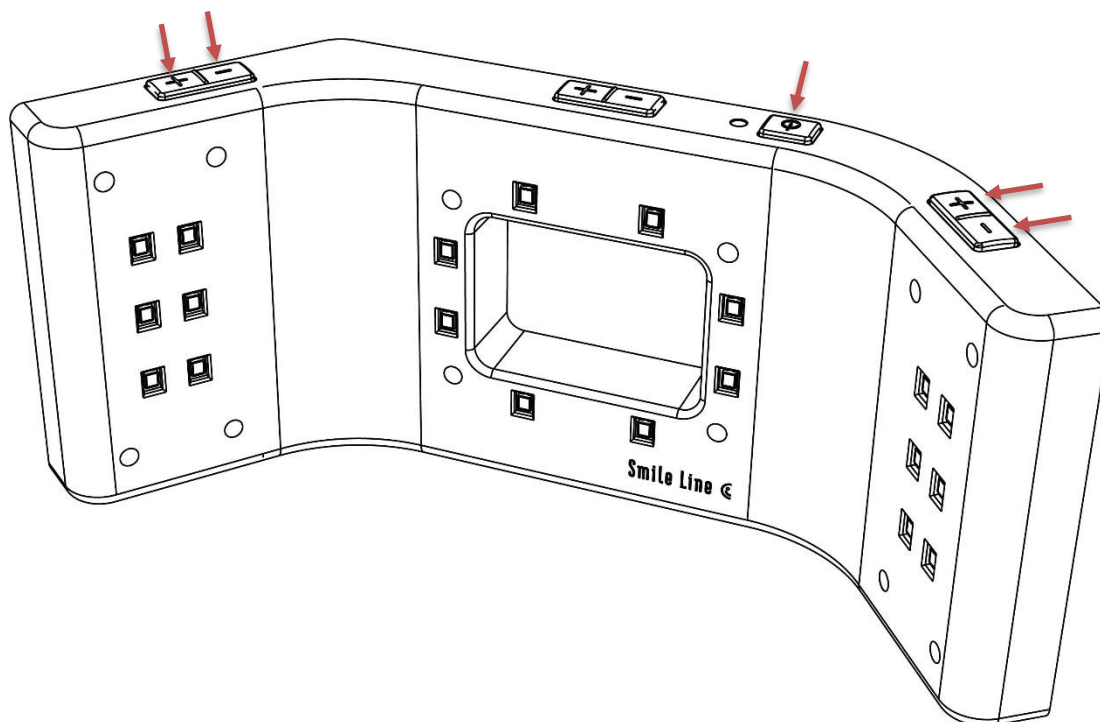
Software

Software requirement :

- Smile Lite MDP Installer v1.0

3. Update mode

To change the mode to update on the MDP, click on these 5 buttons :



4. Update

Start of the process

1. Execute the setup « Smile Lite MDP Installer v1.0 ».

If Windows SmartScreen is enabled, follow these steps :

a. Click on the link « More info ».

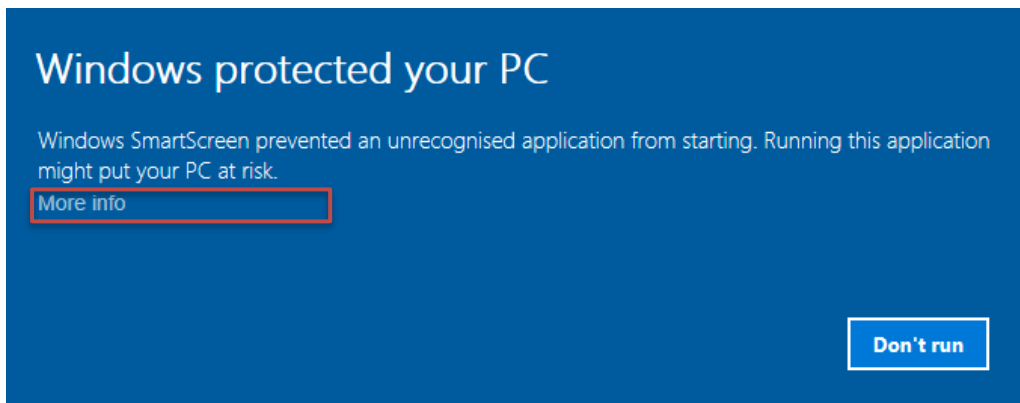


Image 01 – Windows SmartScreen

b. Click on the button « Run anyway ».

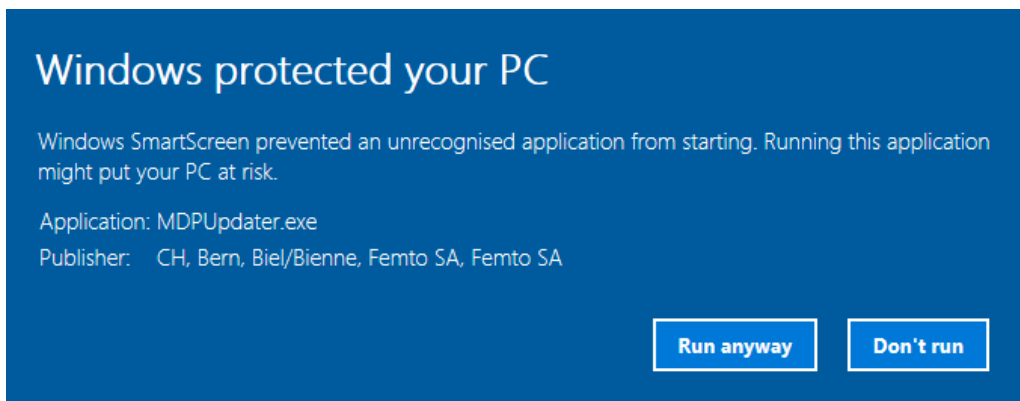


Image 02 – Windows SmartScreen

If Windows SmartScreen is disabled, the user account control window appears directly.

c. To the question « Do you want to allow this application to make changes to your device? », you must answer « **yes** ».

USB Detection

2. Follow the installation wizard.



Image 03 – Smile Lite MDP Installer

3. When the Connection USB appears, connect the MDP to the PC.

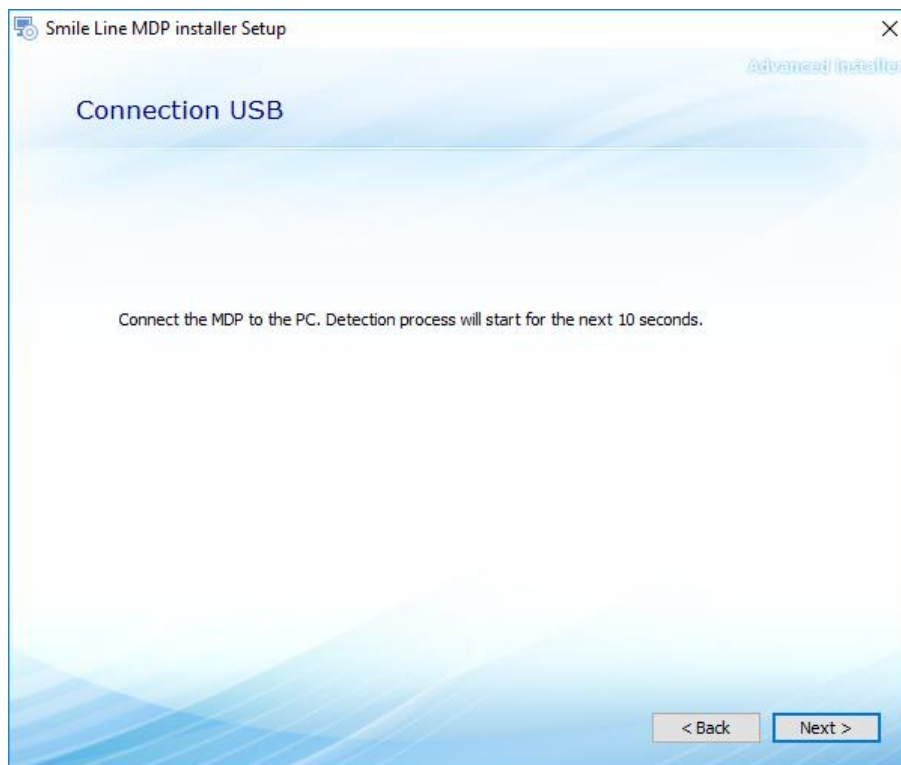


Image 04 – Smile Lite MDP Installer

- a. If the MDP is not detected, push one time the power button.

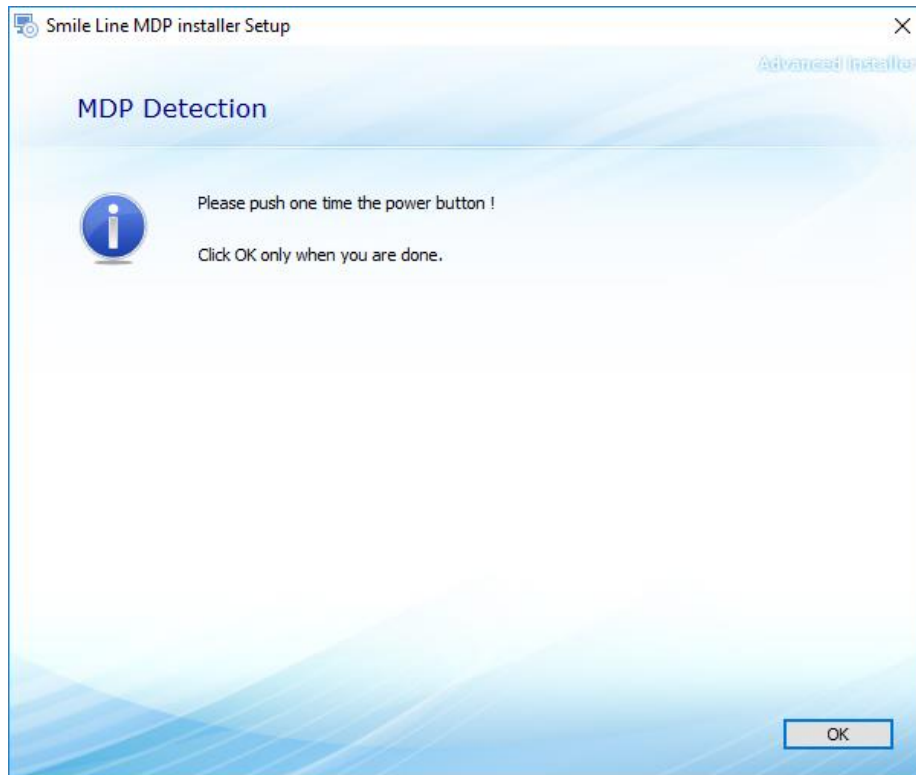


Image 05 - Smile Lite MDP Installer

- b. If the MDP is still not detected, disconnect the MDP and restart manually the setup.

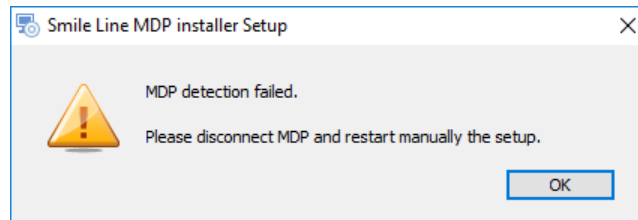


Image 06 - Smile Lite MDP Installer

Installation

4. When the MDP is detected, click on the button « Install ».

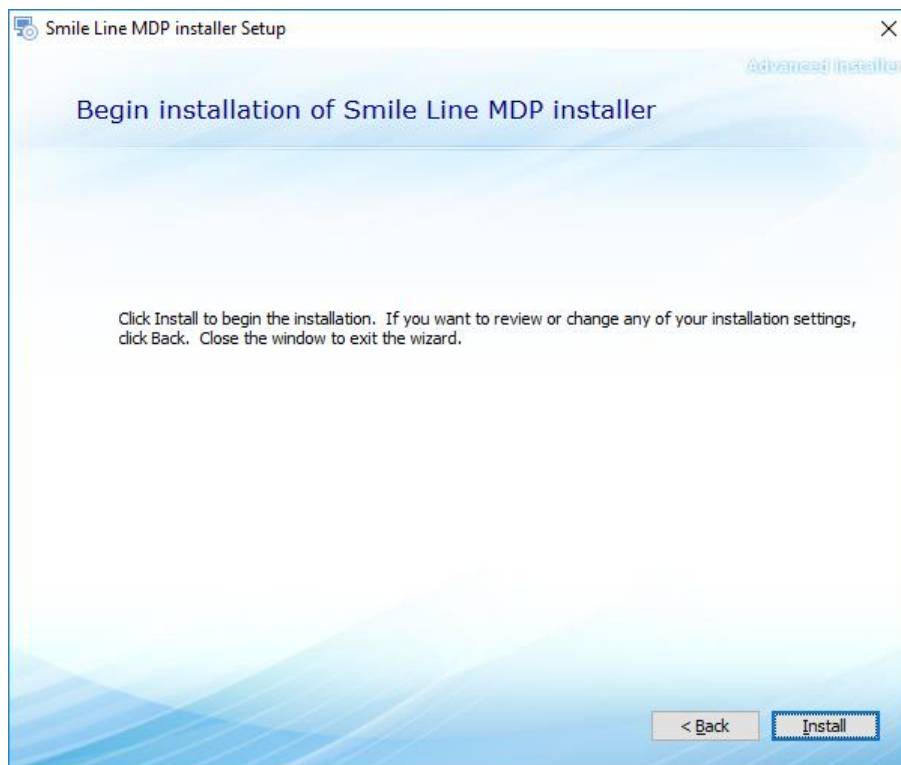


Image 07 - Smile Lite MDP Installer

5. When the security window appears, click on the button « Install ».

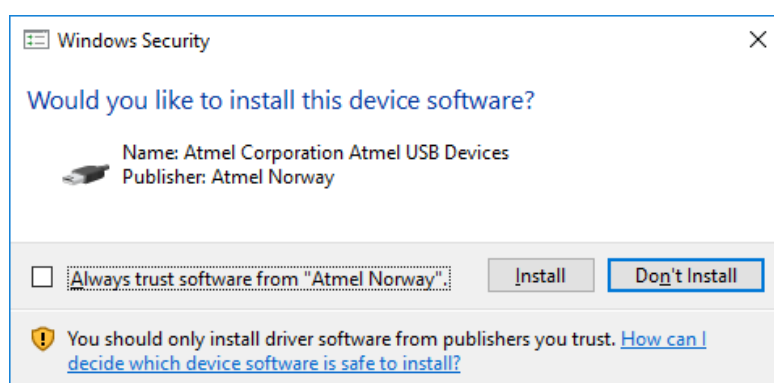


Image 08 – Windows Security

6. When the drivers are installed, the installation wizard start the installation of the update.



This step may take a few minutes!

7. At the end of the update, the installation wizard indicates that the process is completed.

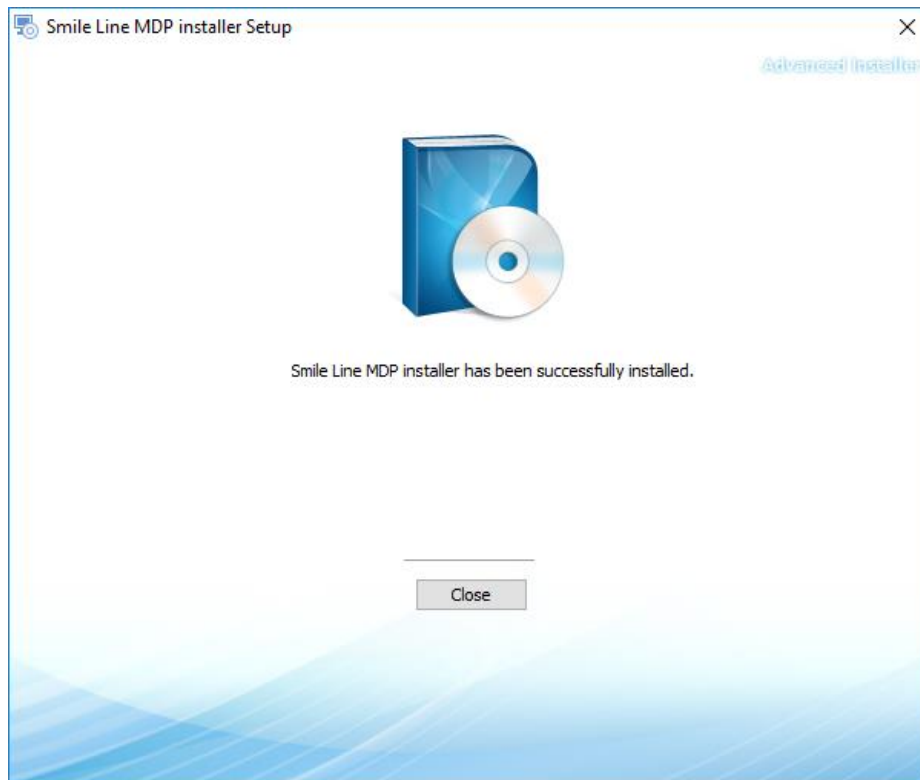


Image 09 – Smile Lite MDP installer